



**Flanders
Scientific
Inc.**

XM and XMP Series Firmware Update Instructions

20230927

Flanders Scientific, Inc.
6215 Shiloh Crossing
Suite G
Alpharetta, GA 30005
Phone: +1.678.835.4934
Fax: +1.678.804.1882
E-Mail: Support@FlandersScientific.com
www.FlandersScientific.com

XM and XMP Series Firmware Update Instructions



Download Firmware

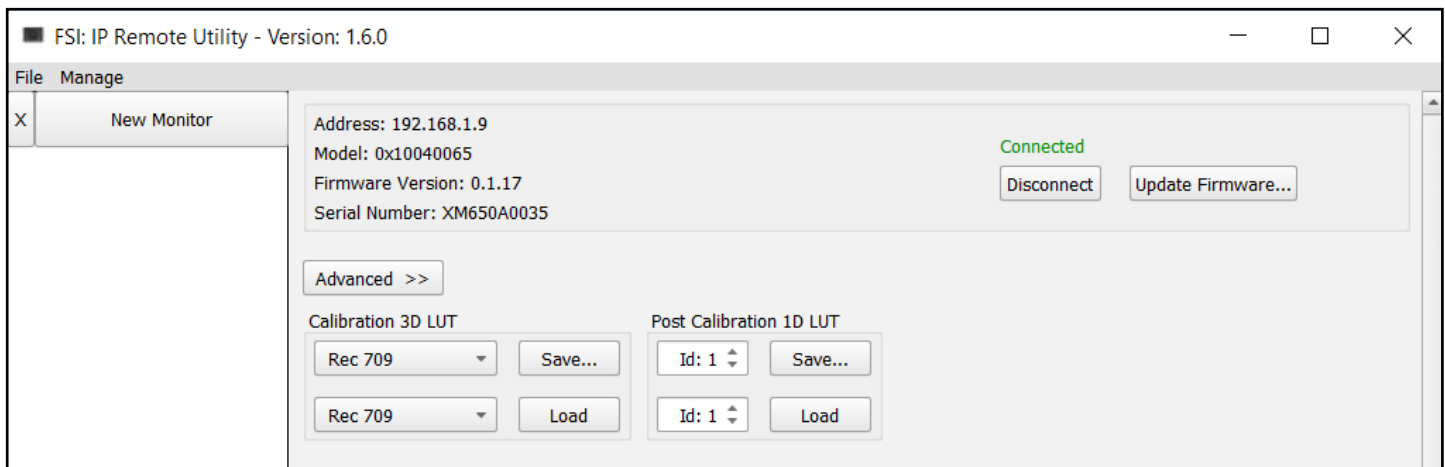
Download the latest firmware from FlandersScientific.com.

This download is a .zip file that contains the firmware .img file.

Unzip the .zip file.

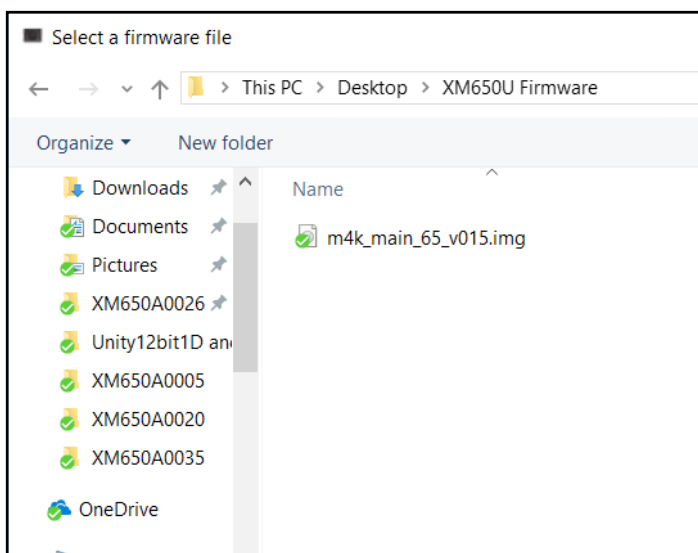
Do not try to run or mount the .img file.

Connect to XM and XMP Series Monitors using the IP Remote Utility. To connect an XM or XMP Series Monitor to a network, connect an ethernet cable to the monitor's LAN port. XM and XMP Series Monitors are DHCP compatible and will obtain an IP address from your network. You can view the monitor's IP address in the System menu.



Select Update Firmware from the control window to open a file selection dialog box.

Select the downloaded and unzipped firmware .img file and press open.



A confirmation dialog box will appear. Press OK to update firmware.

The monitor will power cycle. Once the monitor reboots power cycle once more to complete the update procedure.

